



PRODUCT	:	LCD MODULE
MODEL NO	:	LCD144ALAG-01-100N-V1
SUPPLIER	:	LCD Mikroelektronik GmbH
DATE	:	JAN.11.2022

SPECIFICATION

Prepared by	Checked	Approved

CUSTOMER:
MODEL NO.:

DATE:

Approved	Checked	Department

ADD: Otto-Lilienthal-Str. 13, D-76275 Ettlingen

E-mail : lcd@lcd-mikroelektronik.de

Web: <http://www.lcd-mikroelektronik.com>



CONTENTS

1. General Specifications	4
2. Mechanical Drawing.....	5
3. PIN Assignment	6
4. Absolute Maximum Rating	7
5. Electrical Characteristics.....	7
5.1. Recommended Operating Condition	7
5.2. Recommended Driving Condition for Backlight.....	7
6. Timing Characteristics	8
6.1.DC Electrical Characteristics	8
6.2.Timing	9
6.3 Power ON/OFF Sequence.....	11
7. Optical Characteristics	12
8. Environmental/Reliability Test.....	15
9. Packing Drawing	16
10. Standard Specifications For Product Quality	17
10.1. Manner of test	17
10.2. Quality specification	17
10.3. Definition of area	17
10.4. Standard of appearance	18
11. Precautions for Use of LCD Modules	20
11.1. Handling Precautions	20
11.2.....	S
torage Precautions.....	21
11.3. Others	21
11.4. USING LCD MODULES	21
11.5. The disposal of waste.....	23
12. Prior Consult Matter	23
13. Factory.....	23



Revision Record

Rev No.	Rev Date	Contents	Remarks
1.0	2022.01.11	New creation	



1. General Specifications

No.	Item	Contents	Unit
1	Size	1.44	inch
2	Resolution	128RGB*128	
3	Interface	Parallel	
4	Color Depth	262	K
5	Technology Type	a-Si	
6	Pixel Pitch	0.1992*0.207	mm
7	Pixel Arrangement	RGB Vertical stripe	
8	Display Mode	Transmissive,TN, Normally White	
9	Viewing Direction	6:00	o'clock
10	LCM (W x H x D)	33.3*38*2.43	mm
11	Active Area (W x H)	25.4976*26.496	mm
12	With/Without TSP	Without CTP	
13	LED Numbers	1	

2.Mechanical Drawing

CUSTOMER'S APPROVED:

DATE:

PAGE:

Technical drawing of the 128RGBX128 LCD module. The drawing includes top, side, and back views with various dimensions and labels.

Top View Dimensions:

- Overall width: 33.30 ± 0.1
- Overall height: 32.60 ± 0.1
- Distance from top edge to start of LCD: 27.7 ± 0.1
- Distance from top edge to start of VA: 26.00
- Distance from top edge to start of AA: 25.4976
- Distance from top edge to start of LCD: 27.7 ± 0.1
- Distance from top edge to start of VA: 26.00
- Distance from top edge to start of AA: 25.4976
- Distance from top edge to start of LCD: 27.7 ± 0.1
- Distance from top edge to start of VA: 26.00
- Distance from top edge to start of AA: 25.4976

Side View Dimensions:

- Overall height: 2.43 ± 0.3
- Distance from top edge to start of LCD: 0.40 ± 0.1
- Distance from top edge to start of VA: 0.35
- Distance from top edge to start of AA: 0.35
- Distance from top edge to start of LCD: 0.40 ± 0.1
- Distance from top edge to start of VA: 0.35
- Distance from top edge to start of AA: 0.35

Back View Dimensions:

- Overall width: 32.60 ± 0.1
- Overall height: 32.60 ± 0.1
- Distance from top edge to start of LCD: 27.7 ± 0.1
- Distance from top edge to start of VA: 26.00
- Distance from top edge to start of AA: 25.4976
- Distance from top edge to start of LCD: 27.7 ± 0.1
- Distance from top edge to start of VA: 26.00
- Distance from top edge to start of AA: 25.4976

Labels:

- 128RGBX128
- PULL TAPE
- TC01846-10-??
- 17.07 \pm 0.5
- 38.00 \pm 0.1
- 32.24 \pm 0.1 (LCD)
- 27.30 (VA)
- 26.496 (A.A)
- 1.83
- 2.80
- 3.20
- 2.80
- 3.65
- 3.90
- 3.00 \pm 0.5
- 0.50 \pm 0.1
- 0.30
- P0.5X31 = 15.5
- 16.50
- 0.3 \pm 0.05
- Contact side
- Stiffener
- 16.50
- 32
- 4.20 \pm 0.5

BACK LIGHT CIRCUIT

K

A

V_F = 3.2V (typ.) @ I_F = 20mA

NO.	DESCRIPTION	DATE
1	Init Version (Modify backlight and FPC on YTS144LAG-01-100N)	2022.01.10
2		
3		
4		

Unit: mm

APU

PIN	SYMBOL	PIN	SYMBOL
1	VSS	17	DE11
2	VDD	18	DE12
3	DE1	19	DE12
4	DE2	20	DE11
5	DE3	21	DE10
6	DE4	22	DE9
7	DE5	23	DE8
8	DE6	24	VSS
9	DE1	25	VDD1
10	DE0	26	VSS
11	VSS	27	DE2
12	DE1	28	DE1
13	CSA	29	DE0
14	DE1	30	DE1
15	DE1	31	A
16	DE1	32	B



3. PIN Assignment

Pin No.	Symbol	I/O	Function	Remark															
1	VSS	P	Ground																
2	VDD	I	Power Supply for Analog, Digital System and Booster Circuit.																
3	DB7	I/O	D[17:0] are used as MCU parallel interface data bus. D0 is the serial input/output signal in serial interface mode. In serial interface, D[17:1] are not used and should be fixed at VDDI or DGND level.																
4	DB6	I/O																	
5	DB5	I/O																	
6	DB4	I/O																	
7	DB3	I/O																	
8	DB2	I/O																	
9	DB1	I/O																	
10	DB0	I/O																	
11	VSS	P	Ground																
12	D/CX	I	Display data/command Selection Pin in MCU Interface. D/CX='1': Display Data or Parameter. D/CX='0': Command Data. In Serial Interface, this is used as SCL. If not used, please fix this pin at VDDI or DGND level.																
13	CSX	I	Chip Selection Pin Low Enable.																
14	WRX	I	Write Enable in MCU Parallel Interface. In 4-line SPI, this pin is used as D/CX (data/ command selection). If not used, please fix this pin at VDDI or DGND level.																
15	RDX	I	Read Enable in 8080 MCU Parallel Interface. If not used, please fix this pin at VDDI or DGND level.																
16	DB15	I/O	D[17:0] are used as MCU parallel interface data bus. D0 is the serial input/output signal in serial interface mode. In serial interface, D[17:1] are not used and should be fixed at VDDI or DGND level.																
17	DB14	I/O																	
18	DB13	I/O																	
19	DB12	I/O																	
20	DB11	I/O																	
21	DB10	I/O																	
22	DB9	I/O																	
23	DB8	I/O																	
24	VSS	P	Ground																
25	VDDI	I	Power Supply for I/O system.																
26	VSS	P	Ground																
27	IM2	I	MCU Parallel Interface Bus and Serial Interface select IM2='1', Parallel Interface IM2='0', Serial Interface																
28	IM1	I	MCU Parallel Interface Type Selection If Not Used, Please Fix this Pin at VDDI or DGND Level.																
29	IM0	I	<table><tr><th>IM1</th><th>IM0</th><th>Parallel Interface</th></tr><tr><td>0</td><td>0</td><td>MCU 8-bit Parallel</td></tr><tr><td>0</td><td>1</td><td>MCU 16-bit Parallel</td></tr><tr><td>1</td><td>0</td><td>MCU 9-bit Parallel</td></tr><tr><td>1</td><td>1</td><td>MCU 18-bit Parallel</td></tr></table>	IM1	IM0	Parallel Interface	0	0	MCU 8-bit Parallel	0	1	MCU 16-bit Parallel	1	0	MCU 9-bit Parallel	1	1	MCU 18-bit Parallel	
IM1	IM0	Parallel Interface																	
0	0	MCU 8-bit Parallel																	
0	1	MCU 16-bit Parallel																	
1	0	MCU 9-bit Parallel																	
1	1	MCU 18-bit Parallel																	
30	RESX	I	This signal will reset the device and it must be applied to properly initialize the chip. Signal is active low.																
31	A	P	LED anode																
32	K	P	LED cathode																

PS. For further details, please refer to ST7735S data sheet.



4. Absolute Maximum Rating

AGND = GND = 0V, Ta = 25°C

Item	Symbol	Min	Max	Unit	Remark
Power Voltage	VDD	-0.3	4.8	V	
	VDDI	-0.3	4.6		
Operating Temperature	T _{OPR}	-20	70	°C	
Storage Temperature	T _{STG}	-30	80	°C	

Note1: The absolute maximum rating values of this product are not allowed to be exceeded at any times. Should a module be used with any of the absolute maximum ratings exceeded, the characteristics of the module may not be recovered, or in an extreme case, the module may be permanently destroyed.

5. Electrical Characteristics

5.1. Recommended Operating Condition

AGND = GND = 0V, Ta = 25°C

Item	Symbol	Min	Typ.	Max	Unit	Remark
Power Voltage	VDD	2.3	3.3	4.8	V	
	VDDI	1.65	2.8	3.7	V	
Input logic high voltage	V _{ih}	0.7 VDDI	-	VDDI	V	
Input logic low voltage	V _{il}	0	-	0.3VDDI	V	

5.2. Recommended Driving Condition for Backlight

Ta = 25°C

Item	Symbol	Min	Typ.	Max	Unit	Remark
Forward Voltage	V _f	2.8	3.2	3.4	V	
Forward Current	I _f		20		mA	
Operating Life Time	-	30000			Hours	

Note 1: Ta means ambient temperature of TFT-LCD module.

Note 2: If the module is driven by high current or at high ambient temperature & humidity condition. The operating life will be reduced.

Note 3: Operating life means brightness goes down to 50% initial brightness. Minimum operating life time is estimated data.



6. Timing Characteristics

6.1. DC Electrical Characteristics

Parameter	Symbol	Condition	Specification			Unit	Related Pins
			Min	Typ	Max		
Power & Operation Voltage							
System Voltage	VDD	Operating Voltage	2.3	3.3	4.8	V	
Interface Operation Voltage	VDDI	I/O Supply Voltage	1.65	2.8	3.7	V	
Gate Driver High Voltage	VGH		10		15	V	
Gate Driver Low Voltage	VGL		-12.4		-7.5	V	
Gate Driver Supply Voltage		VGH-VGL	17.5		27.5	V	
Input / Output							
Logic-High Input Voltage	VIH		0.7VDDI		VDDI	V	Note 1
Logic-Low Input Voltage	VIL		VSS		0.3VDDI	V	Note 1
Logic-High Output Voltage	VOH	IOH = -1.0mA	0.8VDDI		VDDI	V	Note 1
Logic-Low Output Voltage	VOL	IOL = +1.0mA	VSS		0.2VDDI	V	Note 1
Logic-High Input Current	IIH	VIN = VDDI			1	uA	Note 1
Logic-Low Input Current	IIL	VIN = VSS	-1			uA	Note 1
Input Leakage Current	IIL	IOH = -1.0mA	-0.1		+0.1	uA	Note 1
VCOM Voltage							
VCOM Amplitude	VCOM		-2		-0.425	V	
Source driver							
Source Output Range	Vsout		0.1		GVDD	V	
Gamma Reference Voltage	GVDD		3.15		4.7	V	
Source Output Settling Time	Tr	Below with 99% precision			20	us	Note 2
Output Offset Voltage	Voffset				35	mV	Note 3

Note1. TA= -30 to 80 °C .

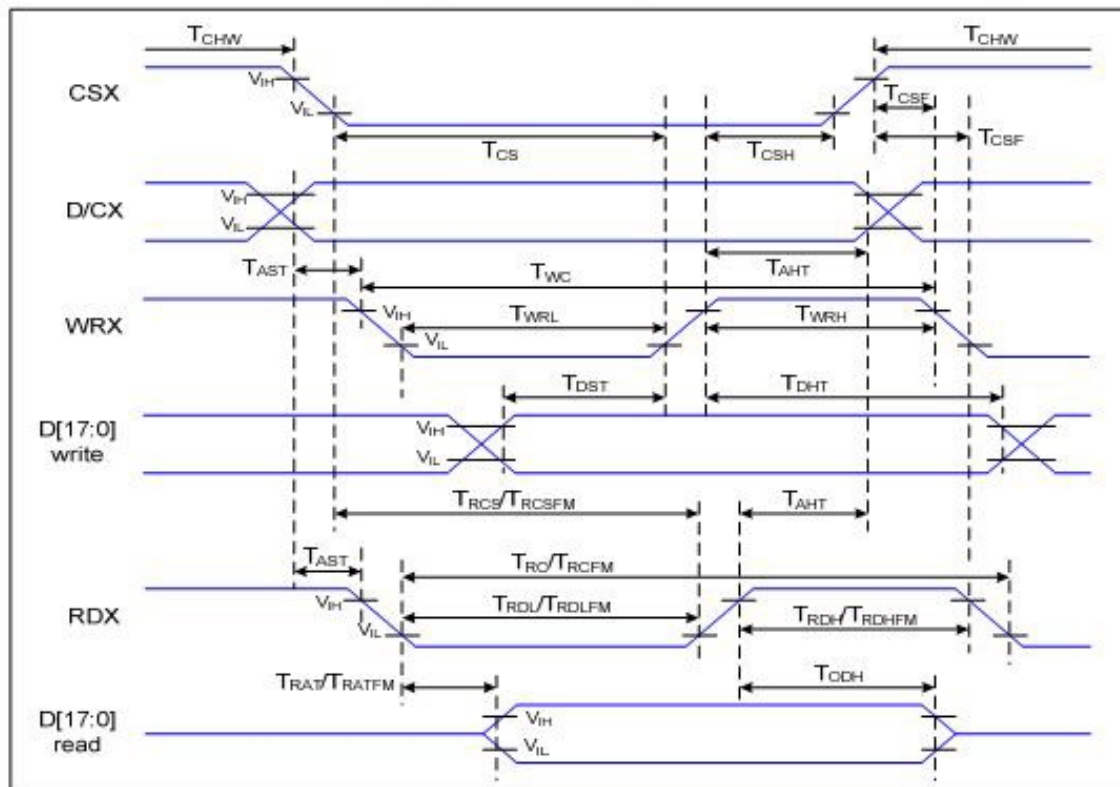
Note2. Source channel loading= 2K Ω +12pF/channel, Gate channel loading=5K Ω +40pF/channel.

Note3. The Max. value is between measured point of source output and gamma setting value.



6. 2. Timing

Parallel Interface Characteristics: 18, 16, 9 or 8-bit Bus (8080 Series MCU Interface)



Parallel Interface Timing Characteristics (8080 Series MCU Interface)

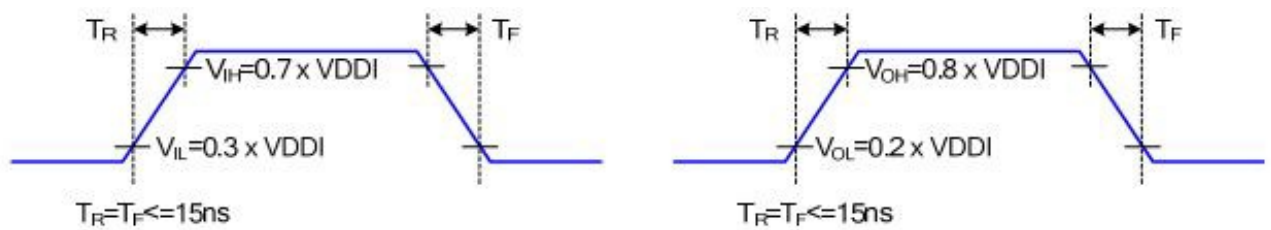
$T_a = 25^\circ\text{C}$, $V_{DDI} = 1.65 \sim 3.7\text{V}$, $V_{DD} = 2.3 \sim 4.8\text{V}$

Signal	Symbol	Parameter	Min	Max	Unit	Description
D/CX	TAST	Address Setup Time	TBD		ns	-
	TAHT	Address Hold Time (Write/Read)	TBD		ns	
CSX	TCHW	Chip Select "H" Pulse Width	TBD		ns	-
	TCS	Chip Select Setup Time (Write)	TBD		ns	
	TRCS	Chip Select Setup Time (Read ID)	TBD		ns	
	TRCSFM	Chip Select Setup time (Read FM)	TBD		ns	
	TCSF	Chip Select Wait Time (Write/Read)	TBD		ns	
	TCSH	Chip Select Hold Time	TBD		ns	
WRX	TWC	Write Cycle	TBD		ns	-
	TWRH	Control Pulse "H" Duration	TBD		ns	
	TWRL	Control Pulse "L" Duration	TBD		ns	
RDX (ID)	TRC	Read Cycle (ID)	TBD		ns	When Read ID Data
	TRDH	Control Pulse "H" Duration (ID)	TBD		ns	
	TRDL	Control Pulse "L" Duration (ID)	TBD		ns	

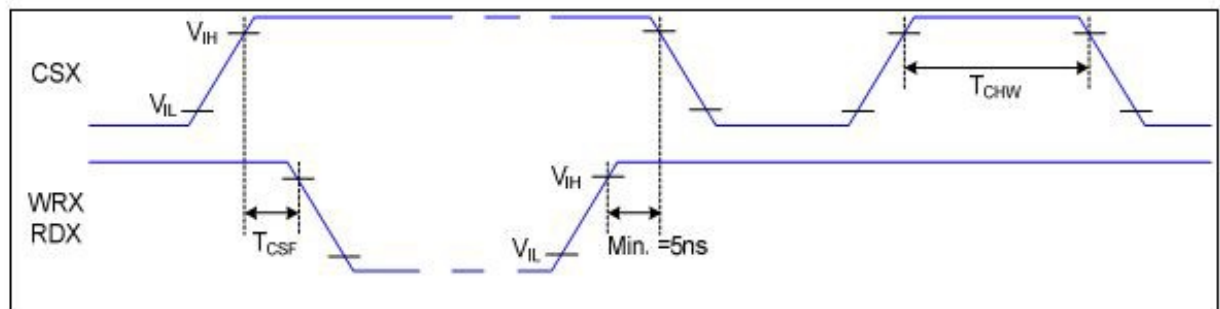


RDX (FM)	TRCFM	Read Cycle (FM)	TBD		ns	When Read from Frame Memory
	TRDHFM	Control Pulse "H" Duration (FM)	TBD		ns	
	TRDLFM	Control Pulse "L" Duration (FM)	TBD		ns	
D[17:0]	TDST	Data Setup Time	TBD		ns	For CL=30pF
	TDHT	Data Hold Time	TBD		ns	
	TRAT	Read Access Time (ID)		TBD	ns	
	TRATFM	Read Access Time (FM)		TBD	ns	
	TODH	Output Disable Time	TBD	TBD	ns	

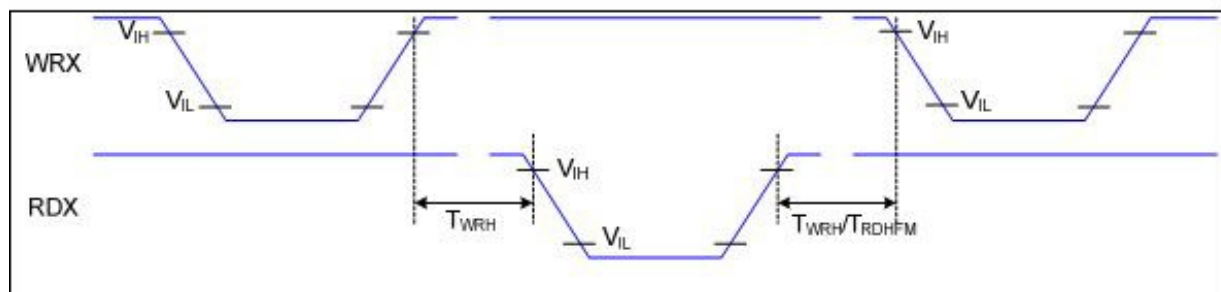
8080 Parallel Interface Characteristics



Rising And Falling Timing for Input And Output Signal



Chip Selection (CSX) Timing



Write-to-Read And Read-to-Write Timing

Note: The rising time and falling time (T_r , T_f) of input signal are specified at 15 ns or less. Logic high and low levels are specified as 30% and 70% of V_{DDI} for Input signals.



6. 3. Power ON/OFF Sequence

VDDI and VDD can be applied in any order

VDD and VDDI can be powered down in any order

During power off, if LCD is in the Sleep Out mode, VDD and VDDI must be powered down minimum 120msec after RESX has been released.

During power off, if LCD is in the Sleep In mode, VDDI or VDD can be powered down minimum 0msec after RESX has been released.

CSX can be applied at any timing or can be permanently grounded. RESX has priority over CSX.

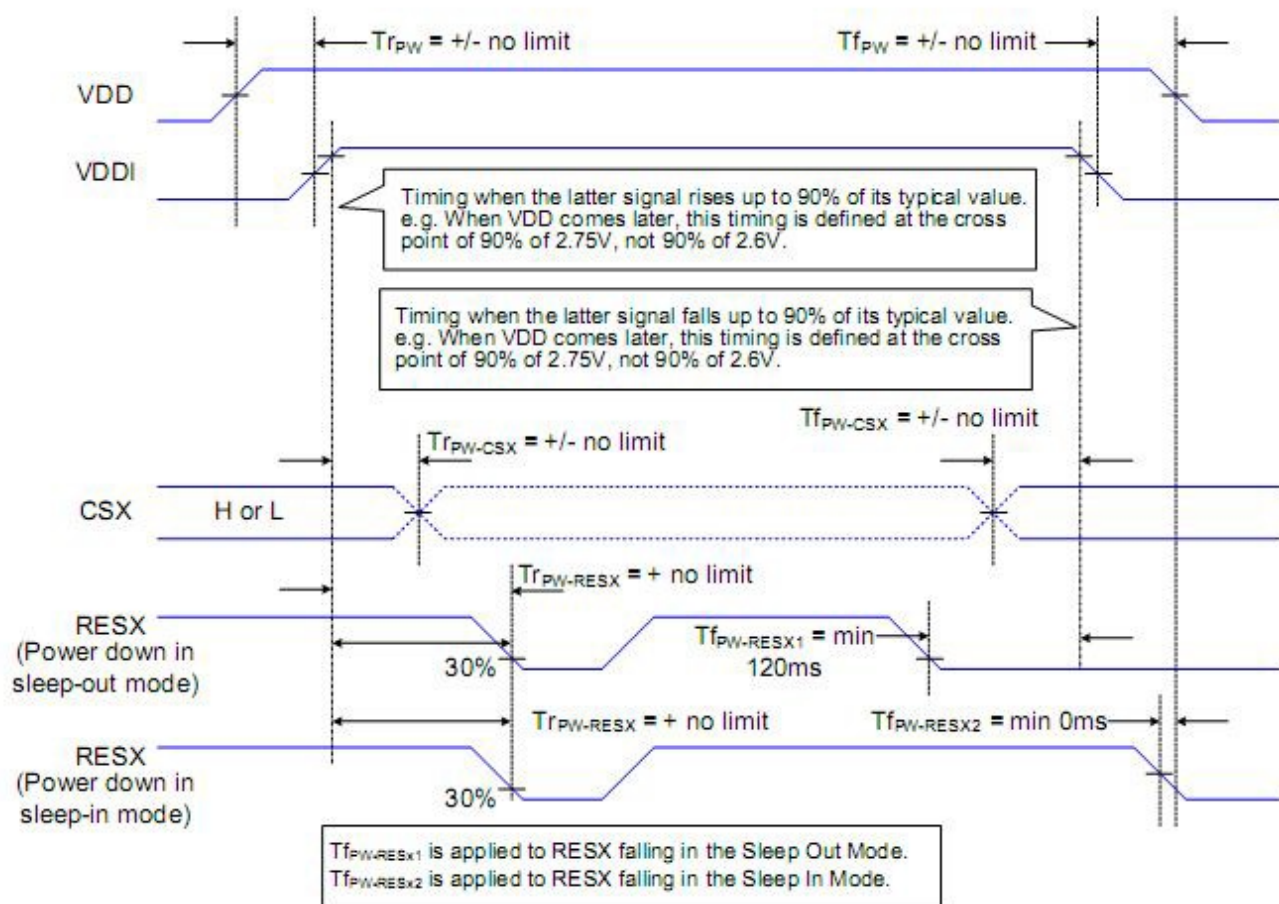
Note 1: There will be no damage to the display module if the power sequences are not met.

Note 2: There will be no abnormal visible effects on the display panel during the Power On/Off Sequences.

Note 3: There will be no abnormal visible effects on the display between end of Power On Sequence and before receiving Sleep Out command. Also between receiving Sleep In command and Power Off Sequence.

Note 4: If RESX line is not held stable by host during Power On Sequence as defined in the sequence below, then it will be necessary to apply a Hardware Reset (RESX) after Host Power On Sequence is complete to ensure correct operation. Otherwise function is not guaranteed.

The power on/off sequence is illustrated below





7. Optical Characteristics

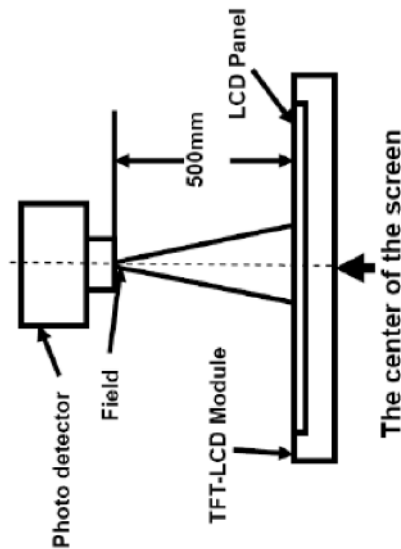
Item		Symbol	Condition	Min	Typ	Max	Unit	Remark
View Angles		θT	$CR \geq 10$	60	70	-	Degree	Note 2
		θB		50	60	-		
		θL		60	70	-		
		θR		60	70	-		
Contrast Ratio		CR	$\theta = 0^\circ$	(400)	(500)	-		Note 1 Note 3
Response Time		$T_{ON}+T_{OFF}$	$25^\circ C$	-	16	32	ms	Note 1 Note 4
Chromaticity	W_x	x		(0.253)	(0.293)	(0.333)		Note 1 Note 5
	W_y	y		(0.285)	(0.325)	(0.365)		
	R_x	x		(0.596)	(0.636)	(0.676)		
	R_y	y		(0.288)	(0.328)	(0.368)		
	G_x	x		(0.243)	(0.283)	(0.323)		
	G_y	y		(0.491)	(0.531)	(0.571)		
	B_x	x		(0.095)	(0.135)	(0.175)		
	B_y	y		(0.094)	(0.134)	(0.174)		
Uniformity		U		75	-	-	%	Note 5
Luminance		L		160	200	-	cd/m ²	Note 1 Note 5

Test Conditions:

1. $I_f=20mA$ (Backlight current), $V_{DD} = 3.3 V$, the ambient temperature is $25^\circ C$.
2. The test systems refer to Note 2.

**Note1: Definition of optical measurement system.**

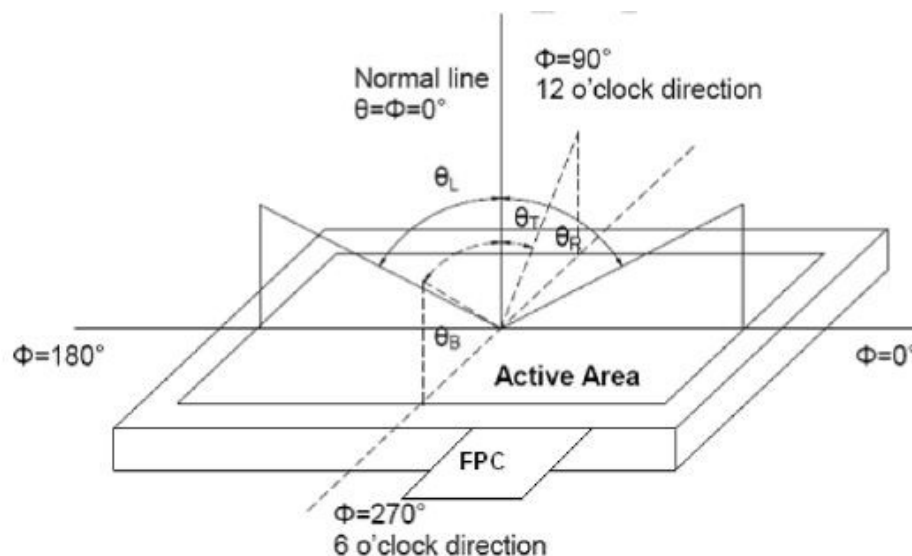
The optical characteristics should be measured in dark room. After 5Minutes operation, the optical properties are measured at the center point of the LCD screen. ALL input terminals LCD panel must be ground when measuring the center area of the panel.



Item	Photo detector	Field
Contrast Ratio	CS1000	1°
Luminance		
Lum Uniformity		
Chromaticity	CS1000	
Response Time	DMS703	-

Note2: Definition of viewing angle range and measurement system.

Viewing angle is measured at the center point of the LCD by CONOSCOPE (DMS703)

**Note3: Definition of contrast ratio**

White state ":The state is that the LCD should drive by Vwhite.

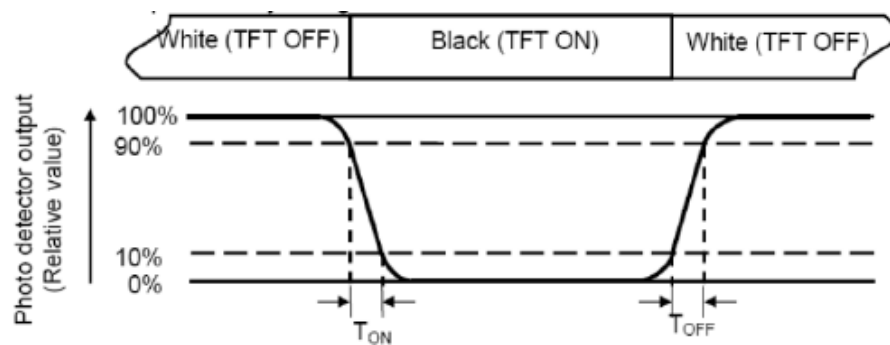
$$\text{Contrast ratio(CR)} = \frac{\text{Luminance measured when LCD is on the "White" state}}{\text{Luminance measured when LCD is on the "Black" state}}$$

"Black state ":The state is that the LCD should drive by Vblack.

Vwhite: To be determined Vblack: To be determined

Note4: Definition of Response time

The response time is defined as the LCD optical switching time interval between "White"state and "Black" state. Rise time (T_{ON})is the time between photo detector output intensity changed from 90% to 10%.And fall time (T_{OFF})is the time between photo detector output intensity changed from 10% to90%.



Note5: Definition of color chromaticity (CIE1931)

Color coordinates measured at center point of LCD.

Color coordinates are subject to actual measurement.

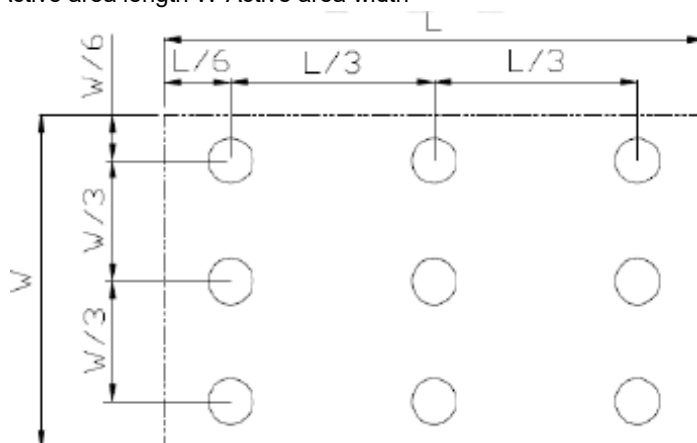
If the data has a bracket, that means reference value of TFT panel or one sample of module, the values of module TBD.

Note6: Definition of Luminance Uniformity

Active area is divided into 9 measuring areas(Refer Fig.2).Every measuring point is placed at the center of each measuring area.

Luminance Uniformity (U)= L_{min}/L_{max}

L-Active area length W-Active area width



L_{max} : The measured Maximum luminance of all measurement position.

L_{min} : The measured Minimum luminance of all measurement position.

Note7: Definition of luminance: Measure the luminance of white state at center point.



8. Environmental/Reliability Test

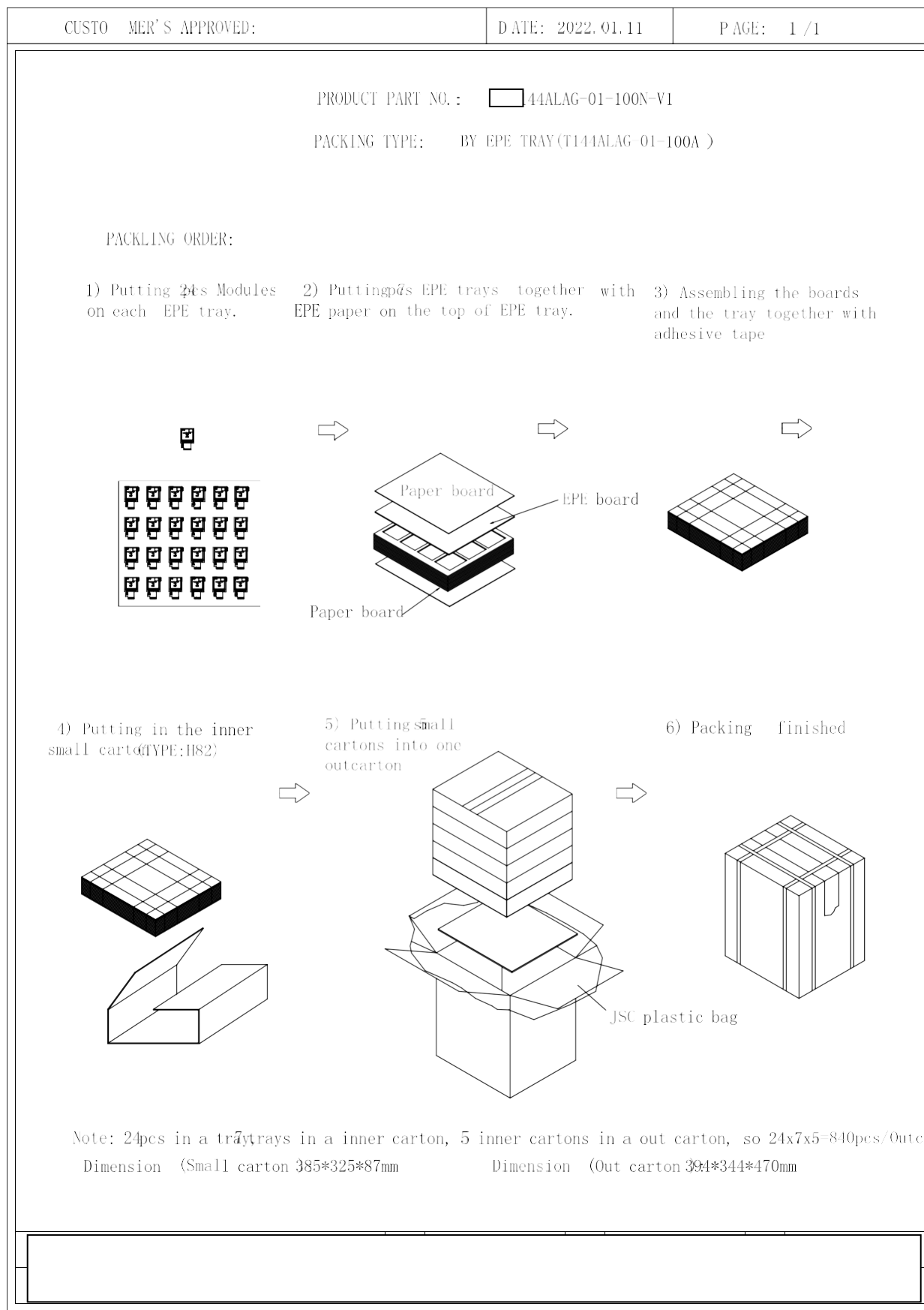
No.	Test Item	Test Condition	Inspection after test
1	High Temperature Storage	80±2℃/240 hours	Inspection after 2~4hours storage at room temperature, the sample shall be free from defects: 1.Air bubble in the LCD; 2.Sealleak; 3.Non-display; 4.Missing segments; 5.Glass crack; 6.Current Idd is twice higher than initial value.
2	Low Temperature Storage	-30±2℃/240 hours	
3	High Temperature Operating	70±2℃/240 hours	
4	Low Temperature Operating	-20±2℃/240 hours	
5	Temperature Cycle	-30℃~ 25℃~ 80℃ × 10cycles (30min.) (5min.) (30min.)	
6	Damp Proof Test	40℃±5℃×90%RH/240 hours	
7	Vibration Test	Frequency: 10Hz~55Hz~10Hz Amplitude: 1.5mm, X, Y, Z direction for total 3hours (Packing condition)	
8	Dropping test	Drop to the ground from 1m height, one time,every side of carton. (Packing condition)	
9	ESD test	Voltage:±8KV R: 330Ω C: 150pF Air discharge, 10time Voltage:±6KV R: 330Ω C: 150pF Contact discharge, 10time	

Remark:

1. The test samples should be applied to only one test item.
2. Sample size for each test item is 5~10pcs.
3. For Damp Proof Test, Pure water(Resistance> 10MΩ) should be used.
4. In case of malfunction defect caused by ESD damage, if it would be recovered to normal state after resetting, it would be judge as a good part.
5. Failure Judgment Criterion: Basic Specification, Electrical Characteristic, Mechanical Characteristic, Optical Characteristic.
6. Please use automatic switch menu(or roll menu) testing mode when test operating mode.



9. Packing Drawing





10. Standard Specifications For Product Quality

10.1. Manner of test:

10.1.1 The test must be under 40W fluorescent light, and the distance of view must be at 35 ± 5 cm

10.1.2 Room temperature $25 \pm 5^\circ\text{C}$ Humidity: $(65 \pm 5)\% \text{RH}$.

10.1.3 If the product is uneven and bright spot, use 2%ND filter to check and confirm. Not visible, OK.

10.1.4 Inspection Angle:

The vision of inspector should be perpendicular to the surface of the Module.

10.1.5 Inspection time:

Perceptibility Test Time: 20 seconds max.

10.2. Quality specification

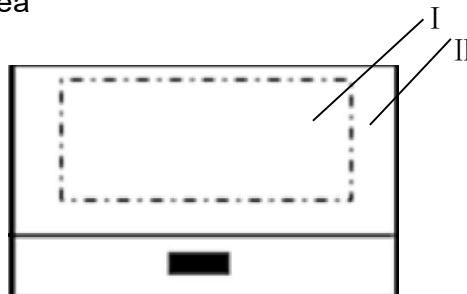
It shall be based on GB2828, inspection level II.

	IETM	CHECK LEVEL	AQL
MAJOR (MA)	1. Liquid crystal leakage 2. Wrong polarizer 3. Outside dimension 4. Bright dot, Dark dot 5. Display abnormal 6. Glass crack	II	0.65
MINOR (MI)	1. Spot Defect (Including black spot, white spot, pinhole, foreign particle, bubbles, hurt) 2. Fragment 3. Line Defect (Including black line, white line, scratch) 4. Incision defect 5. Newton's ring 6. Other visual defects	II	1.0

10.3 Definition of area

10.3.1 I area: viewing area


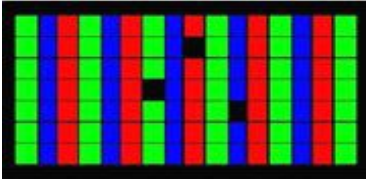
“ area: outside viewing area



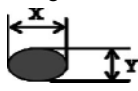
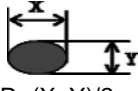
**10.4. Standard of appearance test for I area: (unit: mm)**

NOTE: Defect ignore for II area.

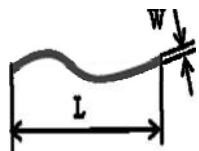
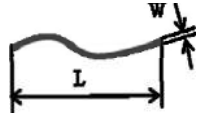
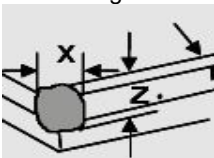
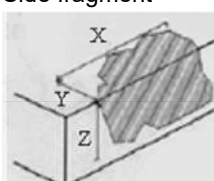
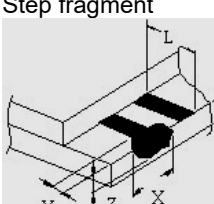
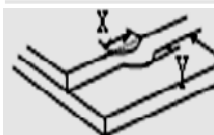
10.4.1 Bright/Dark Dots explain

Name	Explain	Definition
Bright dot	Dots appear bright and unchanged in size in which LCD panel is displaying under black pattern. 	The definition of dot: The size of a defective dot over 1/2 of single pixel dot is regarded as one defective dot . Note: One pixel consists of 3 sub-pixels, including R,G, and B dot. (Sub-pixel = Dot)
Dark dot	Dots appear dark and unchanged in size in which LCD panel is displaying under pure red, green, blue pattern. 	
Adjacent Dot	Adjacent two sub-pixel are defect (define two dot defect)	

10.4.2 Inspection standard

No	Items	Criterion				Checking manner	Defect classes
1	Bright/dark dot (亮、暗点)	LCD≤4.3"	4.3"<LCD<7"	7"≤LCD≤12"	LCD>12"	Checking with eyes	MAJ
		Bright dot: N≤2 Dark dot: N≤3 Total: N≤4	Bright dot: N≤3 Dark dot: N≤4 Total: N≤6	Bright dot: N≤4 Dark dot: N≤5 Total: N≤8	Bright dot: N≤5 Dark dot: N≤6 Total: N≤10		
		The distance between the two defect dots shall be greater than 5mm The distance between two defect dots above 7 inches shall be more than 10 mm					
		Note: Adjacent dot defect N≤0					
2	Spot defects (black and white spot, pinhole, foreign matter, dent, backlight foreign matter)  D=(X+Y)/2	D≤0.15 Ignore 0.15 <D≤0.3 N≤3 0.3<D N=0	D≤0.2 Ignore 0.2 <D≤0.5 N≤4 0.5<D N=0	D≤0.2 Ignore 0.2 <D≤0.5 N≤5 0.5<D N=0	D≤0.2 Ignore 0.2 <D≤0.5 N≤6 0.5<D N=0	Checking with eyes	MIN
3	Bubble  D=(X+Y)/2	D≤0.2 Ignore 0.2 <D≤0.5 N≤3 0.5<D N=0	D≤0.2 Ignore 0.2 <D≤0.5 N≤4 0.5<D N=0	D≤0.2 Ignore 0.2 <D≤0.5 N≤5 0.5<D N=0	D≤0.2 Ignore 0.2 <D≤0.5 N≤6 0.5<D N=0		



No	Items	Criterion				Checking manner	Defect classes
4	Line defects(black and white line, backlight foreign matter etc.) 	LCD≤4.3"	4.3"<LCD<7"	7"≤LCD≤12"	LCD>12"	Checking with eyes	MIN
		W≤0.03 Ignore 0.03<W≤0.06 L≤5 N≤3 W>0.06 L>5 N=0	W≤0.03 Ignore 0.03<W≤0.1 L≤5 N≤4 W>0.1 L>5 N=0	W≤0.03 Ignore 0.03<W≤0.1 L≤5 N≤5 W>0.1 L>5 N=0	W≤0.03 Ignore 0.03<W≤0.1 L≤5 N≤6 W>0.1 L>5 N=0		
5	Scratch 	W≤0.03 Ignore 0.03<W≤0.2 1.0<L≤5.0 N≤3 W>0.2 L>5 N=0	W≤0.03 Ignore 0.03<W≤0.2 1.0<L≤5.0 N≤4 W>0.2 L>5 N=0	W≤0.03 Ignore 0.03<W≤0.2 1.0<L≤5.0 N≤5 W>0.2 L>5 N=0	W≤0.03 Ignore 0.03<W≤0.2 1.0<L≤5.0 N≤6 W>0.2 L>5 N=0	Checking with eyes	MIN
6	Display abnormal	Not allowed				Checking with eyes	MAJ
7	Outside dimension	Accord with drawing				Calipers	MAJ
8	Glass crack	Not allowed				Checking with eyes	MAJ
9	Leak	Not allowed				Checking with eyes	MAJ
10	Comer fragment 	X≤3 Y≤3 Z≤T Ignore Note : 1、no hurt identifying 、wire、 seal 2 、 T: Glass thickness X: Length Y: Width Z: thickness				Checking with eyes	MIN
11	Side fragment 	Y≤1 Z≤T Ignore Note : 1、no hurt identifying 、wire、 seal 2 、 T: Glass thickness X: Length Y: Width Z: thickness				Checking with eyes	MIN
	Step fragment 	Y≤1 and Y≤1/4 L				Checking with eyes	MIN
	Incision defect 	Y≤1 and accord with outside dimension				Checking with eyes	MIN



11. Precautions for Use of LCD Modules

11.1 Handling Precautions

- (1) The display panel is made of glass and polarizer. As glass is fragile, it tends to become chipped during handling especially on the edges. Please avoid dropping or jarring. Do not subject it to a mechanical shock by dropping it or impact.
- (2) If the display panel is damaged and the liquid crystal substance leaks out, be sure not to get any in your mouth. If the substance contacts your skin or clothes, wash it off using soap and water.
- (3) Do not apply excessive force to the display surface or the adjoining areas since this may cause the color tone to vary. Do not touch the display with bare hands. This will stain the display area and degraded insulation between terminals (some cosmetics are determined to the polarizer).
- (4) The polarizer covering the display surface of the LCD module is soft and easily scratched. Handle this polarizer carefully. Do not touch, push or rub the exposed polarizer with anything harder than an HB pencil lead (glass, tweezers, etc.). Do not put or attach anything on the display area to avoid leaving marks on. Condensation on the surface and contact with terminals due to cold will damage, stain or dirty the polarizer. After products are tested at low temperature they must be warmed up in a container before coming in contact with room temperature air.
- (5) If the display surface becomes contaminated, breathe on the surface and gently wipe it with a soft dry cloth. If it is heavily contaminated, moisten cloth with one of the following solvents
 - Isopropyl alcohol
 - Ethyl alcohol
 - Do not scrub hard to avoid damaging the display surface.
- (6) Solvents other than those above-mentioned may damage the polarizer. Especially, do not use the following.
 - Water
 - Ketone
 - Aromatic solvents

Wipe off saliva or water drops immediately, contact with water over a long period of time may cause deformation or color fading. Avoid contacting oil and fats.
- (7) Exercise care to minimize corrosion of the electrode. Corrosion of the electrodes is accelerated by water droplets, moisture condensation or a current flow in a high-humidity environment.
- (8) Install the LCD Module by using the mounting holes. When mounting the LCD module make sure it is free of twisting, warping and distortion. In particular, do not forcibly pull or bend the I/O cable or the backlight cable.
- (9) Do not attempt to disassemble or process the LCD module.
- (10) NC terminal should be open. Do not connect anything.
- (11) If the logic circuit power is off, do not apply the input signals.
- (12) Electro-Static Discharge Control, Since this module uses a CMOS LSI, the same careful attention should be paid to electrostatic discharge as for an ordinary CMOS IC. To prevent destruction of the elements by static electricity, be careful to maintain an optimum work environment.
 - Before remove LCM from its packing case or incorporating it into a set, be sure the module and your body have the same electric potential. Be sure to ground the body when handling the LCD modules.
 - Tools required for assembling, such as soldering irons, must be properly grounded. make certain the AC power source for the soldering iron does not leak. When using an electric screwdriver to attach LCM, the screwdriver should be of ground potentiality to minimize as much as possible any transmission of electromagnetic waves produced sparks coming from the commutator of the motor.
 - To reduce the amount of static electricity generated, do not conduct assembling and other work under dry conditions. To reduce the generation of static electricity be careful that the air in the work is not too dried. A relative humidity of 50%-60% is recommended. As far as possible make the electric potential of your work clothes and that of the work bench the ground potential.

The LCD module is coated with a film to protect the display surface. Exercise care when peeling off this protective film since static electricity may be generated.



- (13) Since LCM has been assembled and adjusted with a high degree of precision, avoid applying excessive shocks to the module or making any alterations or modifications to it.
- Do not alter, modify or change the shape of the tab on the metal frame.
 - Do not make extra holes on the printed circuit board, modify its shape or change the positions of components to be attached.
 - Do not damage or modify the pattern writing on the printed circuit board.
 - Absolutely do not modify the zebra rubber strip (conductive rubber) or heat seal connector.
 - Except for soldering the interface, do not make any alterations or modifications with a soldering iron.
 - Do not drop, bend or twist LCM.

11.2 Storage Precautions

When storing the LCD modules, the following precaution is necessary.

- (1) Store them in a sealed polyethylene bag. If properly sealed, there is no need for the dessicant.
- (2) Store them in a dark place. Do not expose to sunlight or fluorescent light, keep the temperature between 0°C and 35°C.
- (3) The polarizer surface should not come in contact with any other objects. (We advise you to store them in the container in which they were shipped).

11.3 Others

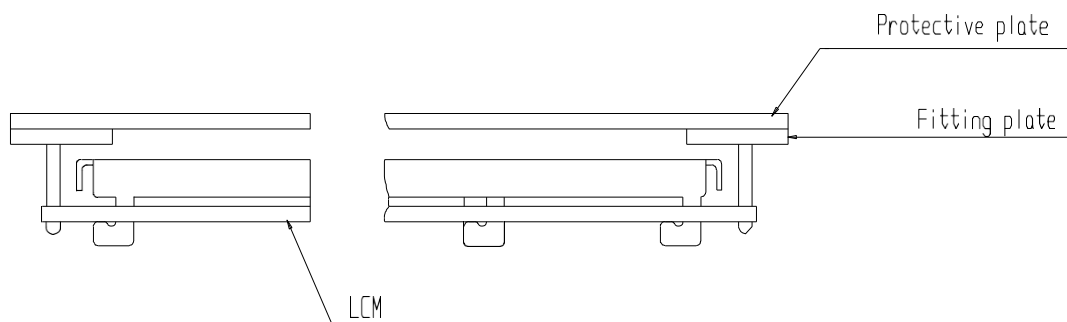
- (1) Liquid crystals solidify under low temperature (below the storage temperature range) leading to defective orientation or the generation of air bubbles (black or white). Air bubbles may also be generated if the module is subject to a low temperature.
- (2) If the LCD modules have been operating for a long time showing the same display patterns, the display patterns may remain on the screen as ghost images and a slight contrast irregularity may also appear. A normal operating status can be regained by suspending use for some time. It should be noted that this phenomenon does not adversely affect performance reliability.
- (3) To minimize the performance degradation of the LCD modules resulting from destruction caused by static electricity etc., exercise care to avoid holding the following sections when handling the modules.
 - Exposed area of the printed circuit board.
 - Terminal electrode sections.

11.4 USING LCD MODULES

Installing LCD Modules

The hole in the printed circuit board is used to fix LCM as shown in the picture below. Attend to the following items when installing the LCM.

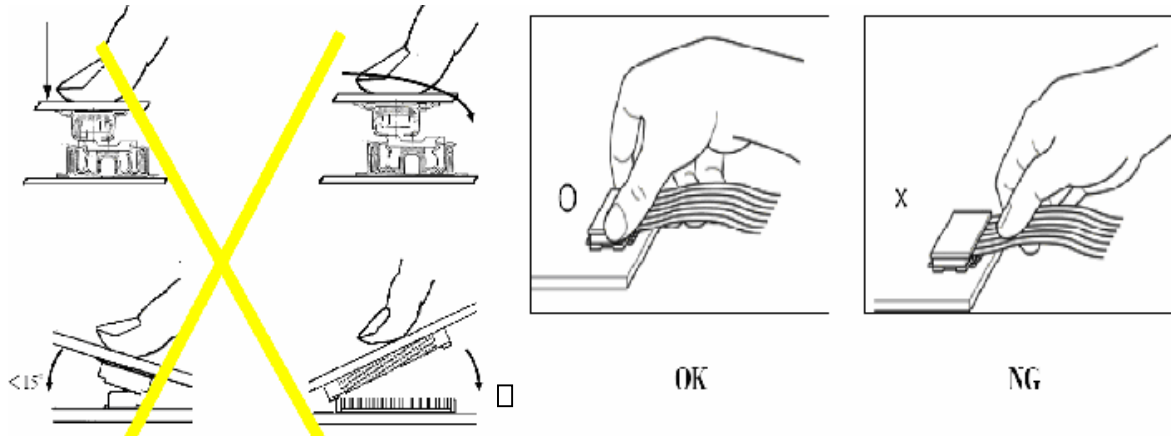
- (1) Cover the surface with a transparent protective plate to protect the polarizer and LC cell.



- (2) When assembling the LCM into other equipment, the spacer to the bit between the LCM and the fitting plate should have enough height to avoid causing stress to the module surface, refer to the individual specifications for measurements. The measurement tolerance should be 0.1mm.

**Precaution for assemble the module with BTB connector:**

Please note the position of the male and female connector position, don't assemble or assemble like the method which the following picture shows

**Precaution for soldering to the LCM**

	Hand soldering	Machine drag soldering	Machine press soldering
No ROHS Product	290 C~350 C. Time :3-5S.	330 C ~350 C. Speed : 4-8mm/s.	300 C~330C. Time : 3-6S. Press: 0.8~1.2Mpa
ROHS Product	340 C~370 C. Time:3-5S.	350 C ~370 C. Time : 4-8 mm/s.	330 C~360C. Time : 3-6S. Press: 0.8~1.2Mpa

- (1) If soldering flux is used, be sure to remove any remaining flux after finishing to soldering operation. (This does not apply in the case of a non-halogen type of flux.) It is recommended that you protect the LCD surface with a cover during soldering to prevent any damage due to flux spatters.
- (2) When soldering the electroluminescent panel and PC board, the panel and board should not be detached more than three times. This maximum number is determined by the temperature and time conditions mentioned above, though there may be some variance depending on the temperature of the soldering iron.
- (3) When remove the electroluminescent panel from the PC board, be sure the solder has completely melted, the soldered pad on the PC board could be damaged.

Precautions for Operation

- (1) It is an indispensable condition to drive LCD's within the specified voltage limit since the higher voltage then the limit cause the shorter LCD life. An electrochemical reaction due to direct current causes LCD's undesirable deterioration, so that the use of direct current drive should be avoided.
- (2) Response time will be extremely delayed at lower temperature than the operating temperature range and on the other hand at higher temperature LCD's show dark color in them. However those phenomena do not mean malfunction or out of order with LCD's, which will come back in the specified operating temperature.
- (3) If the display area is pushed hard during operation, the display will become abnormal. However, it will return to normal if it is turned off and then back on.
- (4) A slight dew depositing on terminals is a cause for electro-chemical reaction resulting in terminal open circuit. Usage under the maximum operating temperature, 50%RH or less is required.
- (5) Input each signal after the positive/negative voltage becomes stable.
- (6) Please keep the temperature within specified range for use and storage. Polarization degradation, bubble generation or polarizer peel-off may occur with high temperature and high humidity.



Safety

- (1) It is recommended to crush damaged or unnecessary LCDs into pieces and wash them off with solvents such as acetone and ethanol, which should later be burned.
- (2) If any liquid leaks out of a damaged glass cell and comes in contact with the hands, wash off thoroughly with soap and water.

11.5 The disposal of waste

For waste disposal, our recommendations are as follows, please refer to your company, and the relevant provisions of the state laws and regulations of the act accordingly

1. Packing materials disposal for our packaging (carton/PS tray/EPE tray/PET tray)
 - 1) Our company used to recycle and reuse materials, packing materials can be you just need to transfer to material recycling companies
2. Our scrap module can't be recycled for reuse, so please dispose of:
 - 1) Our scrap module can't be recycled for reuse, products and components are "served" can lead to accidents
 - 2) Our scrap can be transfer to material recycling companies, dismantling, to ensure that scrap in relatively advanced technology products, environmental protection measures of relatively perfect environment for processing.
3. WEEE order must be executed in product scrap.

12. Prior Consult Matter

1. (1) For standard products, we keep the right to change material, process...for improving the product property without notice on our customer.
(2) For OEM products, if any change needed which may affect the product property, we will consult with our customer in advance.
2. If you have special requirement about reliability condition, please let us know before you start the test on our samples.

13. Factory

FACTORY NAME: LCD Mikroelektronik GmbH

FACTORY ADDRESS: Otto-Lilienthal-Str. 13, D-76275 Ettlingen